

SERVICE MANUAL

SPLIT TYPE
AIR CONDITIONER

CASSETTE type (50Hz)

Models

Indoor unit

Outdoor unit

AUG36RLC3W

AOG36RPA3L

AUY36RLC3W

AOY36RPA3L

AUT36RLC3W

AOT36RPA3L

AUG45RLB3W

AOG45RPA3L

AUY45RLB3W

AOY45RPA3L

AUT45RLB3W

AOT45RPA3L

CONTENTS

SPECIFICATIONS.....	1
OUTLINE AND DIMENSIONS.....	2
CIRCUIT DIAGRAM.....	3
REFRIGERANT SYSTEM DIAGRAM.....	4
INDOOR PCB CIRCUIT DIAGRAM.....	5
OUTDOOR PCB CIRCUIT DIAGRAM.....	6
DISASSEMBLY ILLUSTRATION.....	7
PARTS LIST.....	15

SPECIFICATIONS

TYPE		COOLING & HEATING	
INDOOR UNIT		AUG36RLC3W AUJ36RLC3W AUT36RLC3W	AUG45RLB3W AUJ45RLB3W AUT45RLB3W
OUTDOOR UNIT		AOG36RPA3L AOY36RPA3L AOT36RPA3L	AOG45RPA3L AOY45RPA3L AOT45RPA3L
COOLING CAPACITY	(kW)	10.3 - 10.5	12.4 - 12.7
HEATING CAPACITY	(kW)	10.5 - 10.7	13.4 - 13.7

ELECTRICAL DATA

POWER SOURCE	(V)	380 - 415		
	(ϕ /Hz)	3 ϕ / 50		
RUNNING CURRENT	(A)	COOL	7.0 - 7.0	8.1 - 8.3
		HEAT	6.2 - 6.3	8.4 - 8.4
INPUT WATTS	(kW)	COOL	4.00 - 4.10	4.35 - 4.45
		HEAT	3.45 - 3.50	4.45 - 4.50
E.E.R.	(kW / kW)	COOL	2.58 - 2.56	2.85 - 2.85
		HEAT	3.04 - 3.06	3.01 - 3.04
STARTING CURRENT	(A)	50	66	
MOISTURE REMOVAL	(ℓ /h)	5.0	6.0	

COMPRESSOR

TYPE	Hermetic type, 2 pole, Three-phase Induction motor, Scroll		
DISCRIMINATION	ZR48K3-TFD-501	ZR61KC-TFD-599	

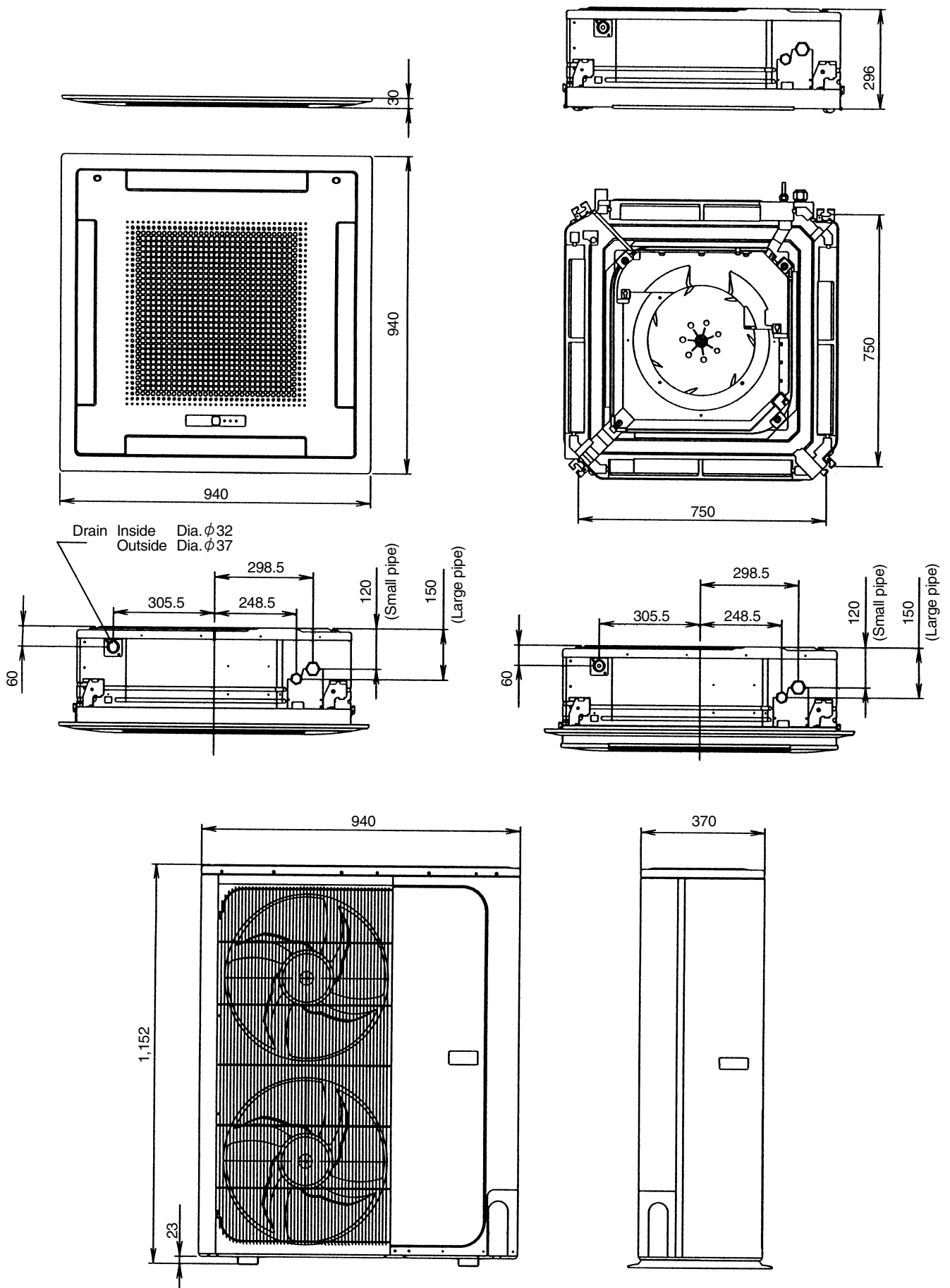
FAN SPEED (r.p.m.)	INDOOR	HIGH	580	620
		MED	500	550
		LOW	420	470
	OUTDOOR	770		
AIR FLOW (m ³ /h)	INDOOR	1,500	1,650	
	OUTDOOR	6,000	5,600	
DIMENSIONS (H x W x D) (mm)	IN	296 x 830 x 830		
	GRILLE	35 x 940 x 940		
	OUT	1,152 x 940 x 370		
WEIGHTS (NET / GROSS) (kg)	IN	40 / 53		
	OUT	100 / 114	110 / 124	
MAX PIPE LENGTH / HEIGHT	(m)	50 / 30		
REMOTE CONTROLLER TYPE	WIRED			

REFRIGERANT CHARGE (R22)

FULL CHARGE AMOUNT	PIPE LENGTH	20.0m (66ft)	3000g (105.8oz)	3500g (123.5oz)
		25.0m (82ft)	3200g (112.9oz)	3700g (130.5oz)
		30.0m (98ft)	3400g (119.9oz)	3900g (137.6oz)
		40.0m (131ft)	3800g (134.0oz)	4300g (151.7oz)
		50.0m (164ft)	4200g (148.2oz)	4700g (165.8oz)
ADDITIONAL CHARGE		40 g / m (0.43 oz / ft)		40 g / m (0.43 oz / ft)
CHARGELESS		20m (66ft)	20m (66ft)	
MAX PIPE LENGTH		50m (164ft)	50m (164ft)	
MAX ELEVATION		30m (98ft)	30m (98ft)	

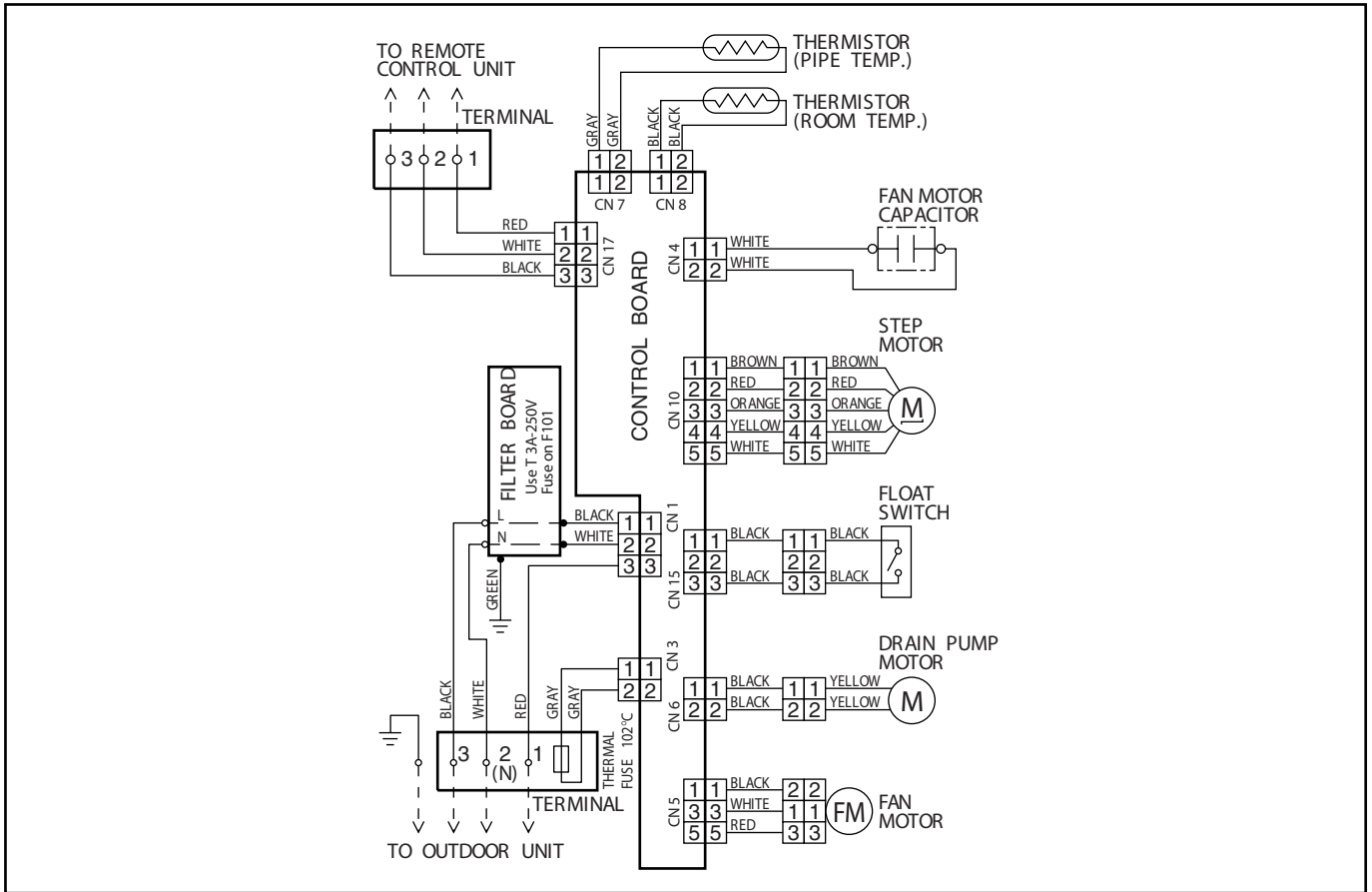
OUTLINE AND DIMENSIONS

Unit : mm

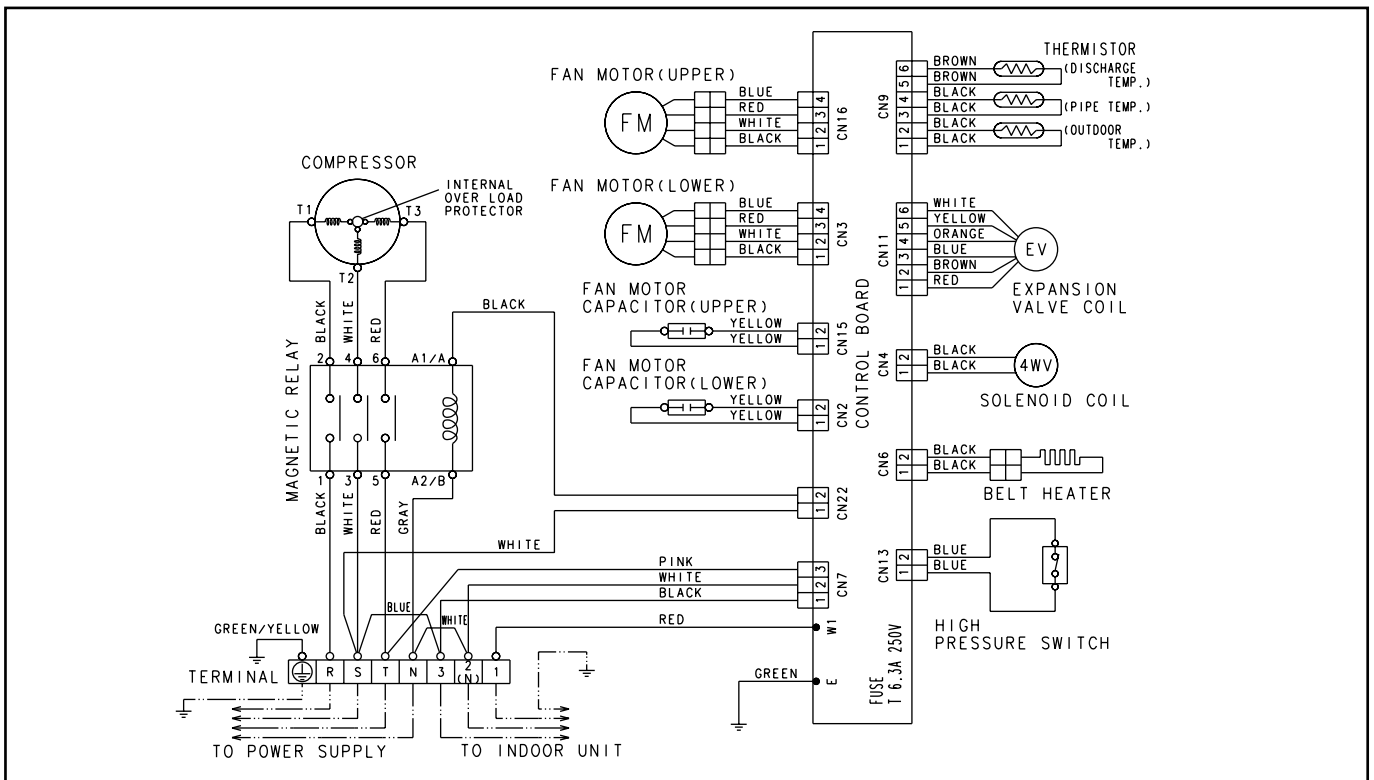


CIRCUIT DIAGRAM

**Models : AUG36RLC3W, AUY36RLC3W, AUT36RLC3W
AUG45RLB3W, AUY45RLB3W, AUT45RLB3W**

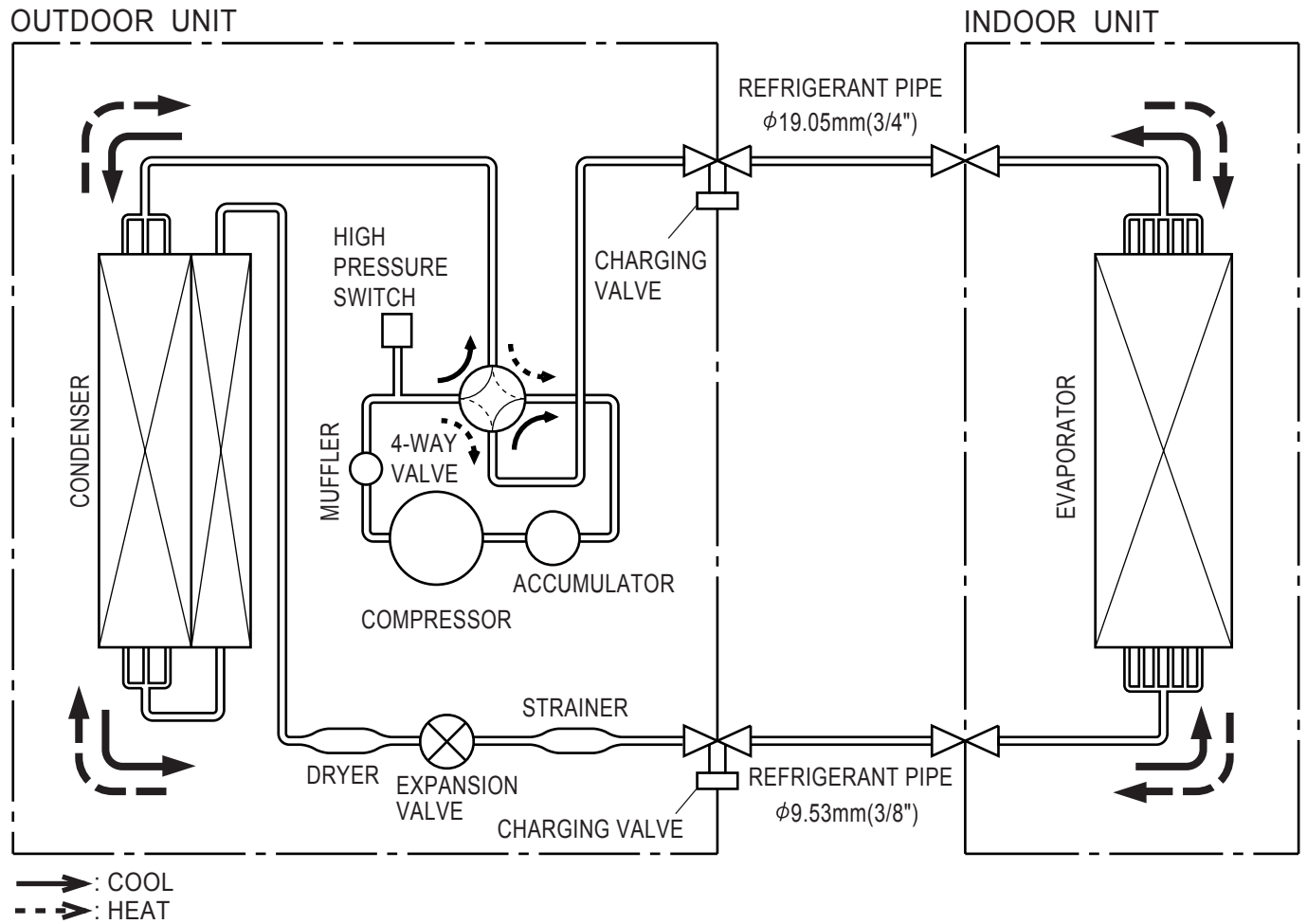


**Models : AOG36RPA3L, AOY36RPA3L, AOT36RPA3L
AOG45RPA3L, AOY45RPA3L, AOT45RPA3L**



REFRIGERANT SYSTEM DIAGRAM

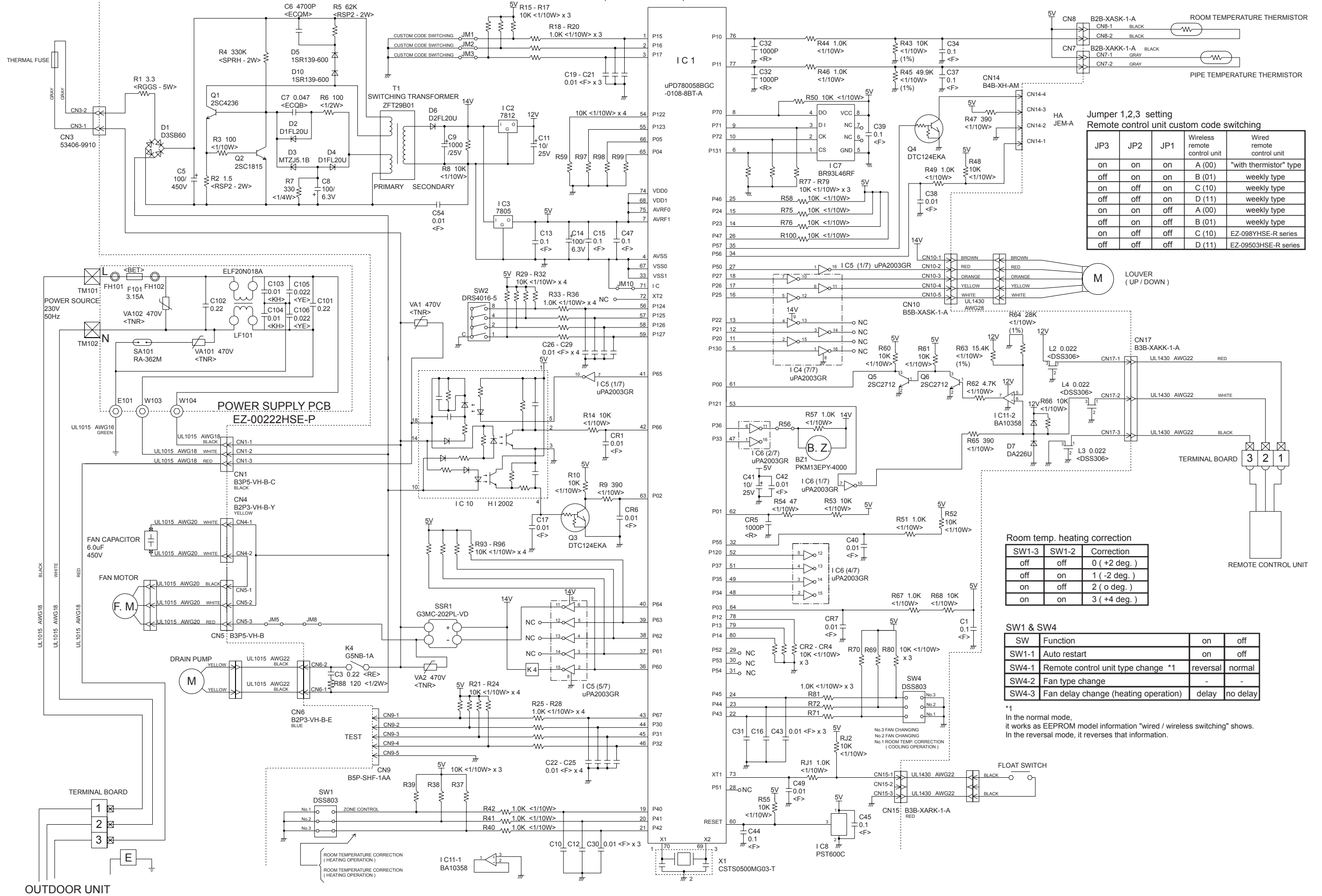
Models : AUG36RLC3W / AOG36RPA3L, AU Y36RLC3W / AOY36RPA3L, AUT36RLC3W / AOT36RPA3L
 AUG45RLB3W / AOG45RPA3L, AU Y45RLB3W / AOY45RPA3L, AUT45RLB3W / AOT45RPA3L



INDOOR PCB CIRCUIT DIAGRAM

Models : AUG36RLC3W, AUY36RLC3W, AUT36RLC3W
 AUG45RLB3W, AUY45RLB3W, AUT45RLB3W

CONTROLLER PCB ASSEMBLY (MAIN PCB) AUG36RLC3W, AUY36RLC3W, AUT36RLC3W : EZ-003GHSE-C AUG45RLB3W, AUY45RLB3W, AUT45RLB3W : EZ-003HHSE-C



Jumper 1,2,3 setting
Remote control unit custom code switching

JP3	JP2	JP1	Wireless remote control unit	Wired remote control unit
on	on	on	A (00)	"with thermistor" type
off	on	on	B (01)	weekly type
on	off	on	C (10)	weekly type
off	off	on	D (11)	weekly type
on	on	off	A (00)	weekly type
off	on	off	B (01)	weekly type
on	off	off	C (10)	EZ-098YHSE-R series
off	off	off	D (11)	EZ-09503HSE-R series

Room temp. heating correction

SW1-3	SW1-2	Correction
off	off	0 (+2 deg.)
off	on	1 (-2 deg.)
on	off	2 (0 deg.)
on	on	3 (+4 deg.)

SW1 & SW4

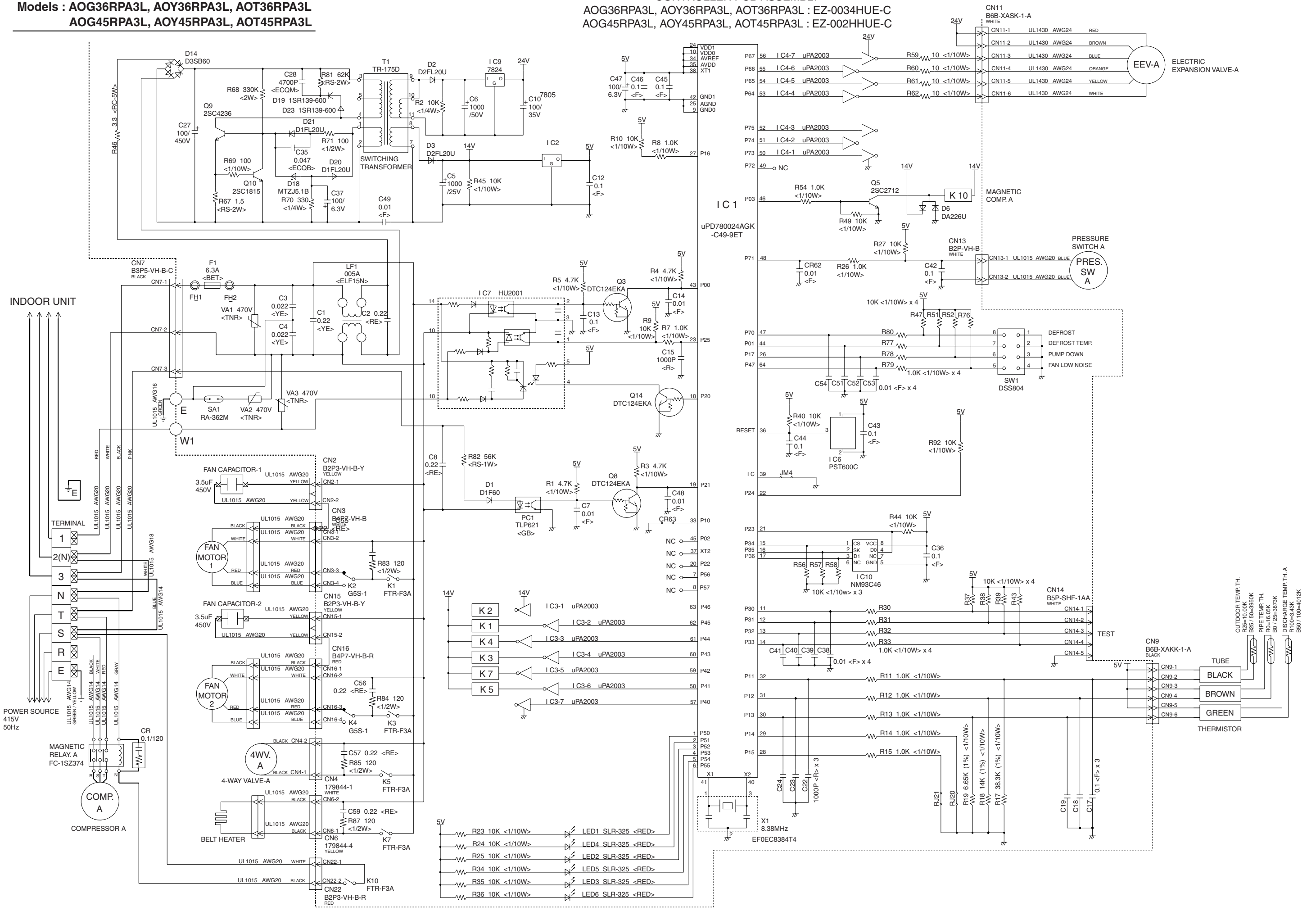
SW	Function	on	off
SW1-1	Auto restart	on	off
SW4-1	Remote control unit type change *1	reversal	normal
SW4-2	Fan type change	-	-
SW4-3	Fan delay change (heating operation)	delay	no delay

*1 In the normal mode, it works as EEPROM model information "wired / wireless switching" shows. In the reversal mode, it reverses that information.

OUTDOOR PCB CIRCUIT DIAGRAM

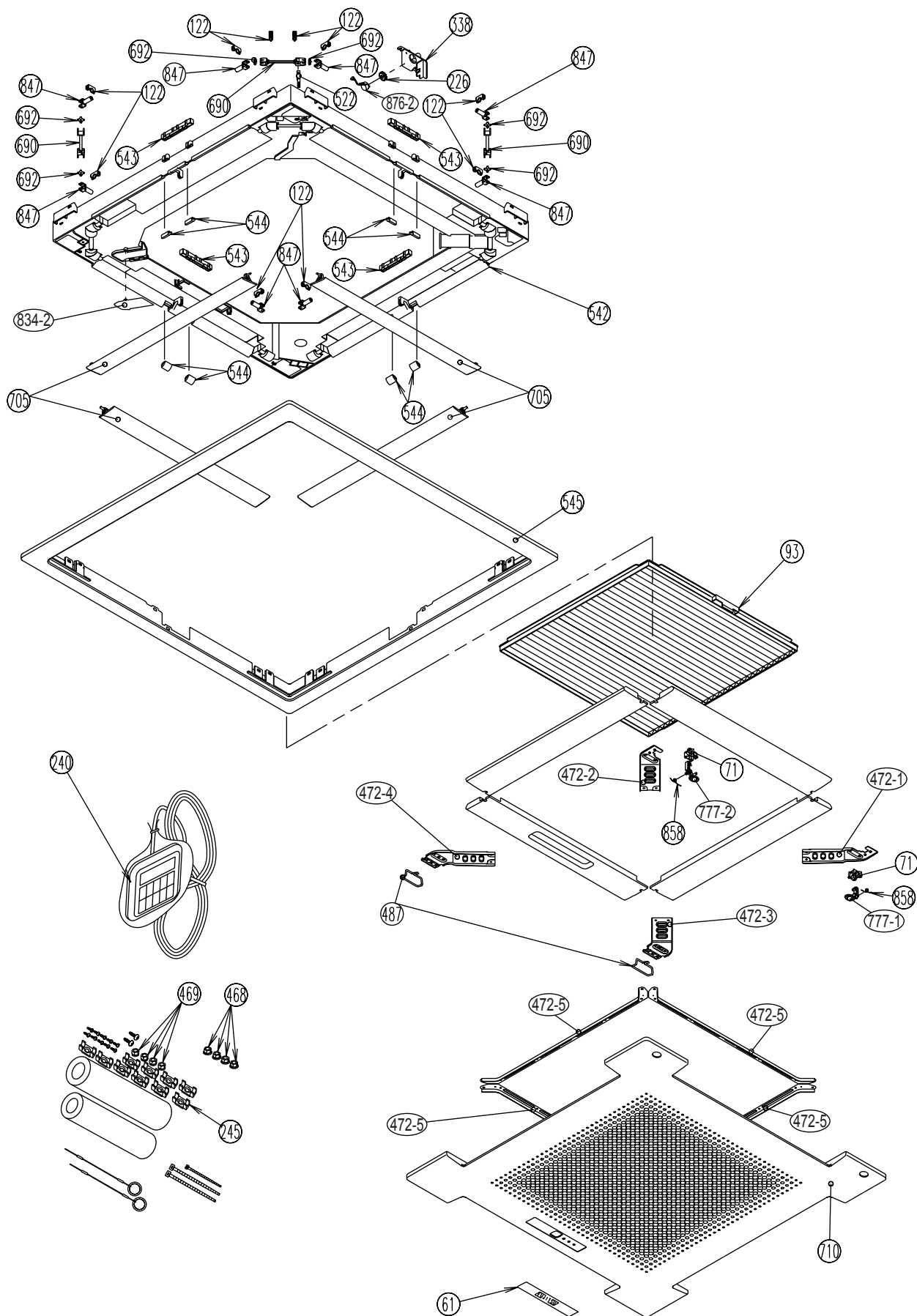
Models : AOG36RPA3L, AOY36RPA3L, AOT36RPA3L
AOG45RPA3L, AOY45RPA3L, AOT45RPA3L

CONTROLLER PCB ASSEMBLY
AOG36RPA3L, AOY36RPA3L, AOT36RPA3L : EZ-0034HUE-C
AOG45RPA3L, AOY45RPA3L, AOT45RPA3L : EZ-002HHUE-C

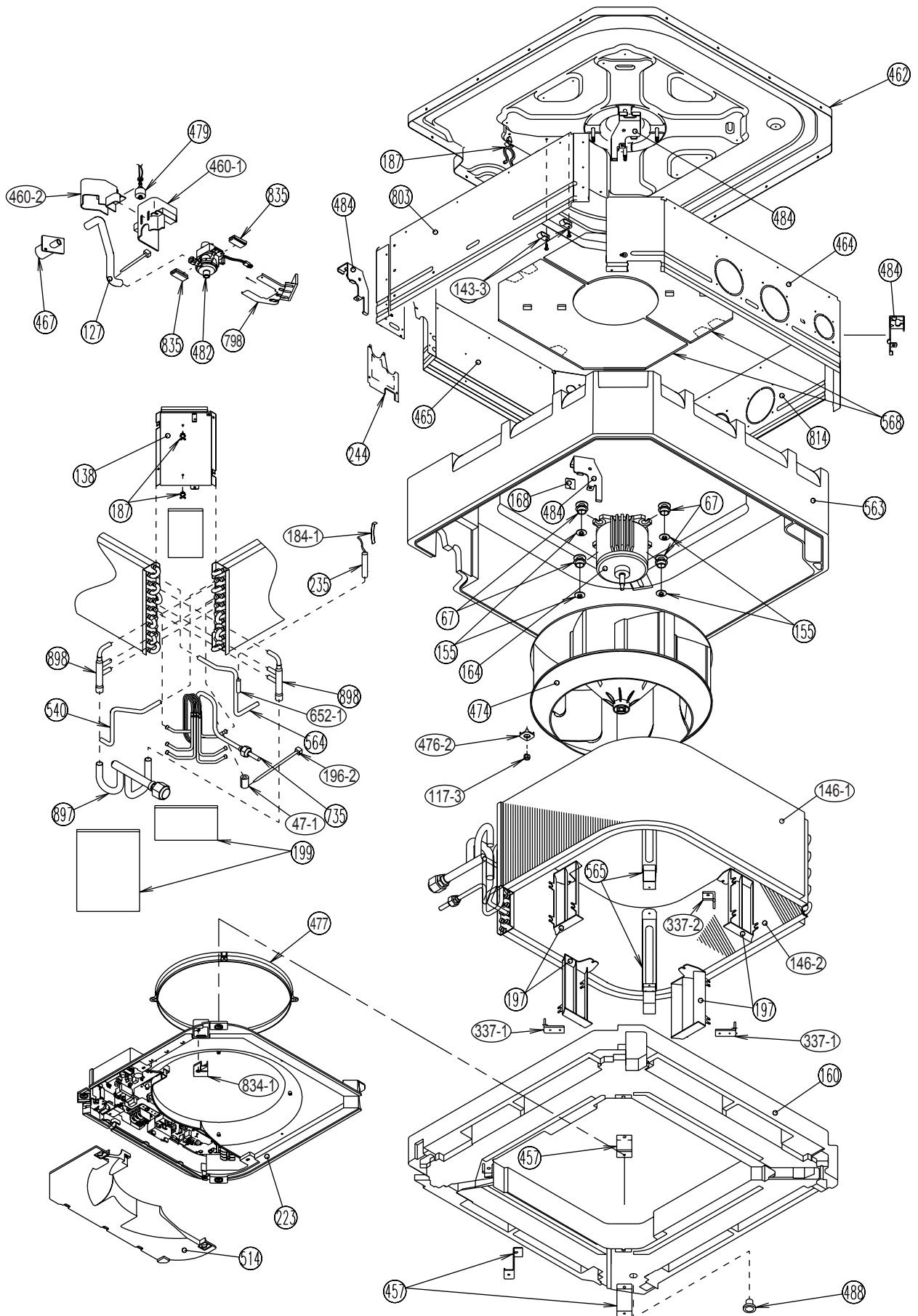


DISASSEMBLY ILLUSTRATION

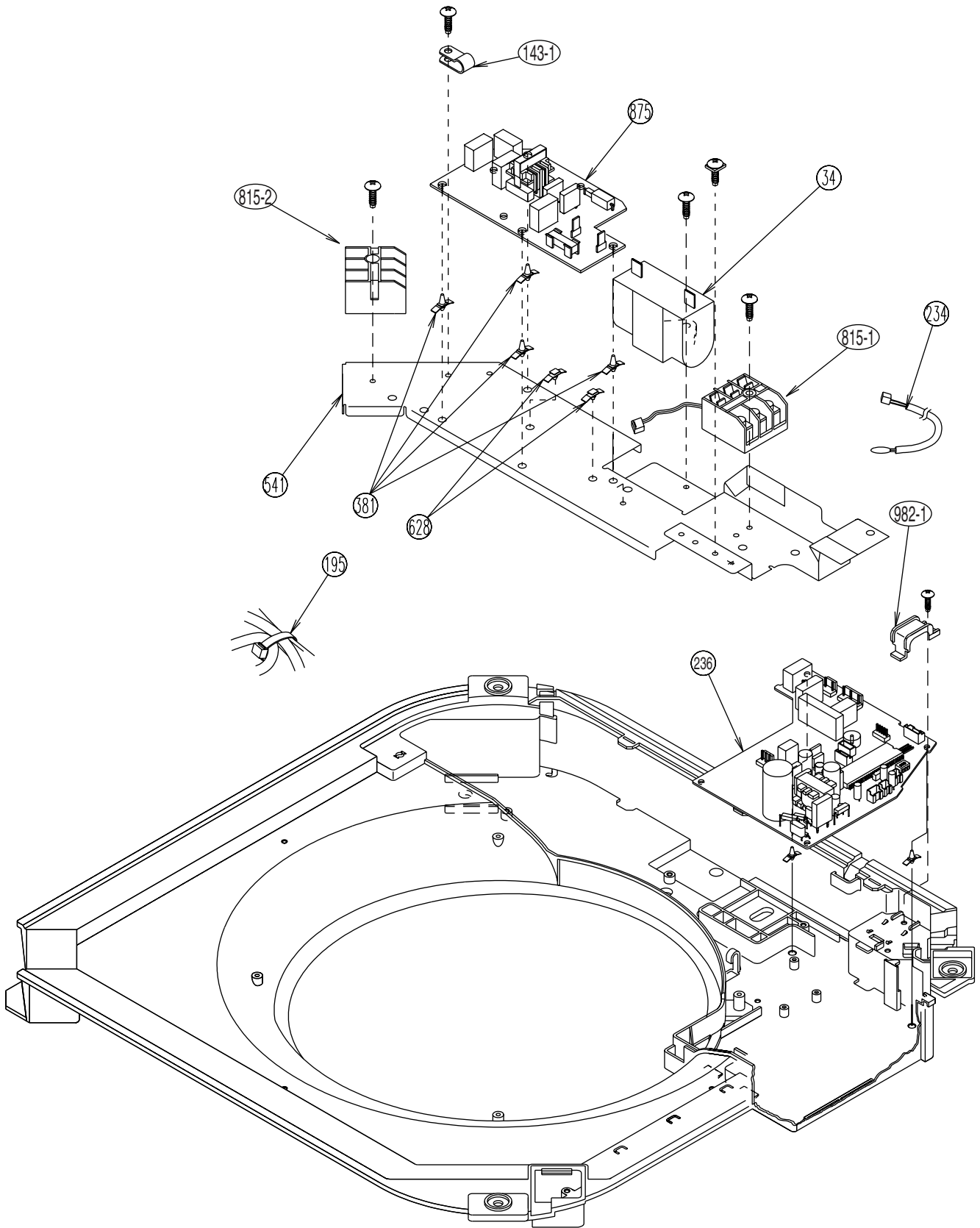
INDOOR UNIT



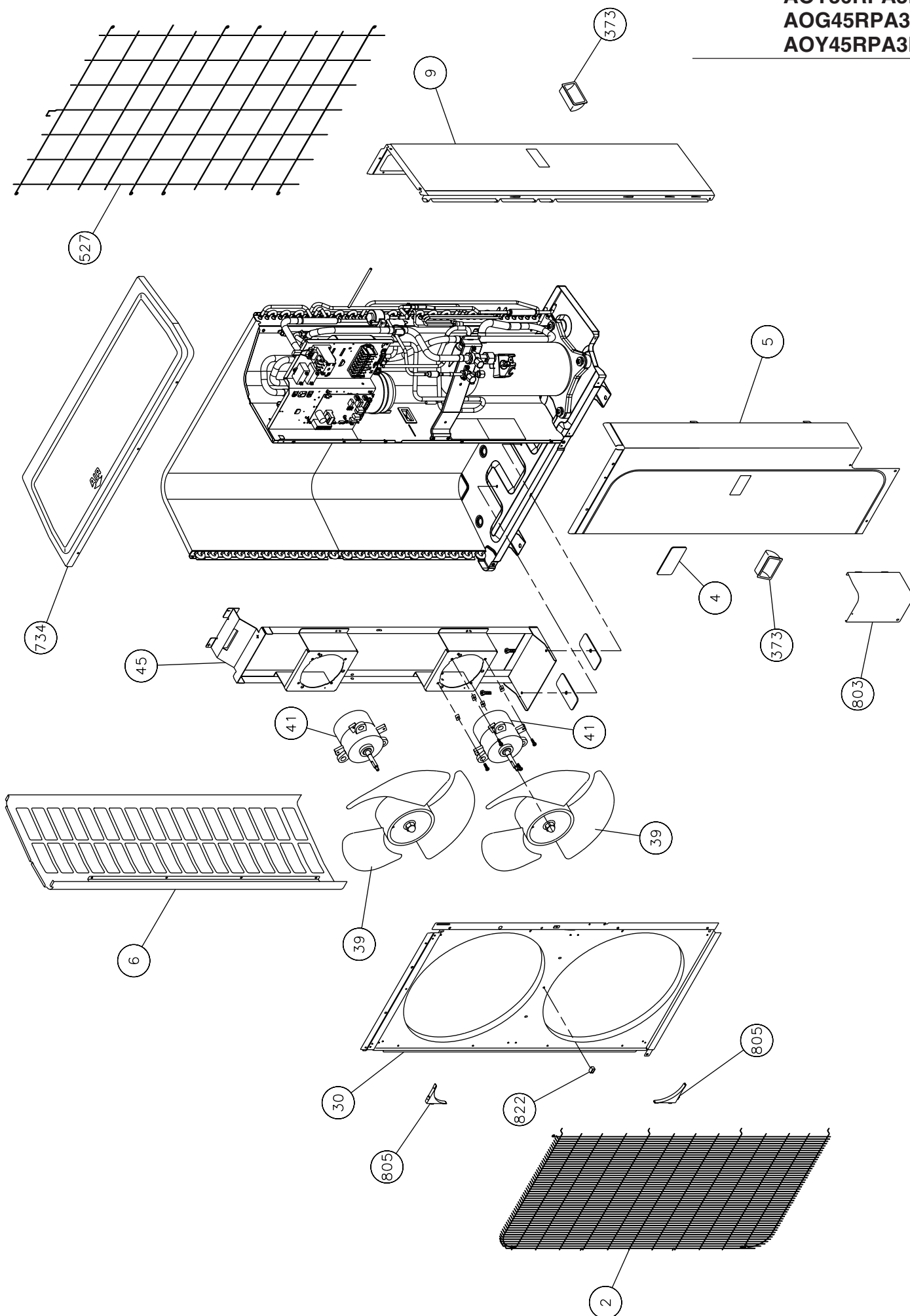
INDOOR UNIT

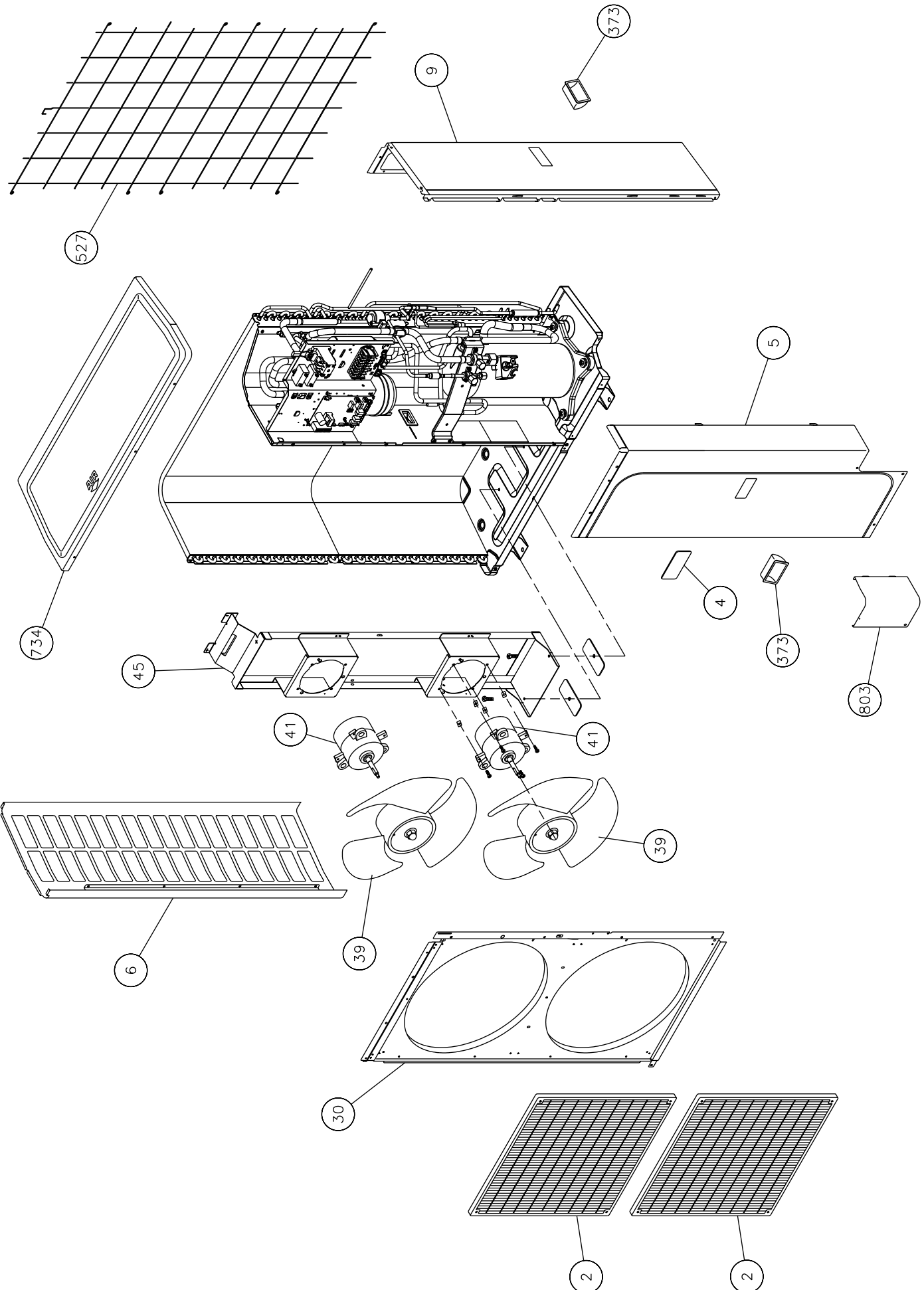


INDOOR UNIT

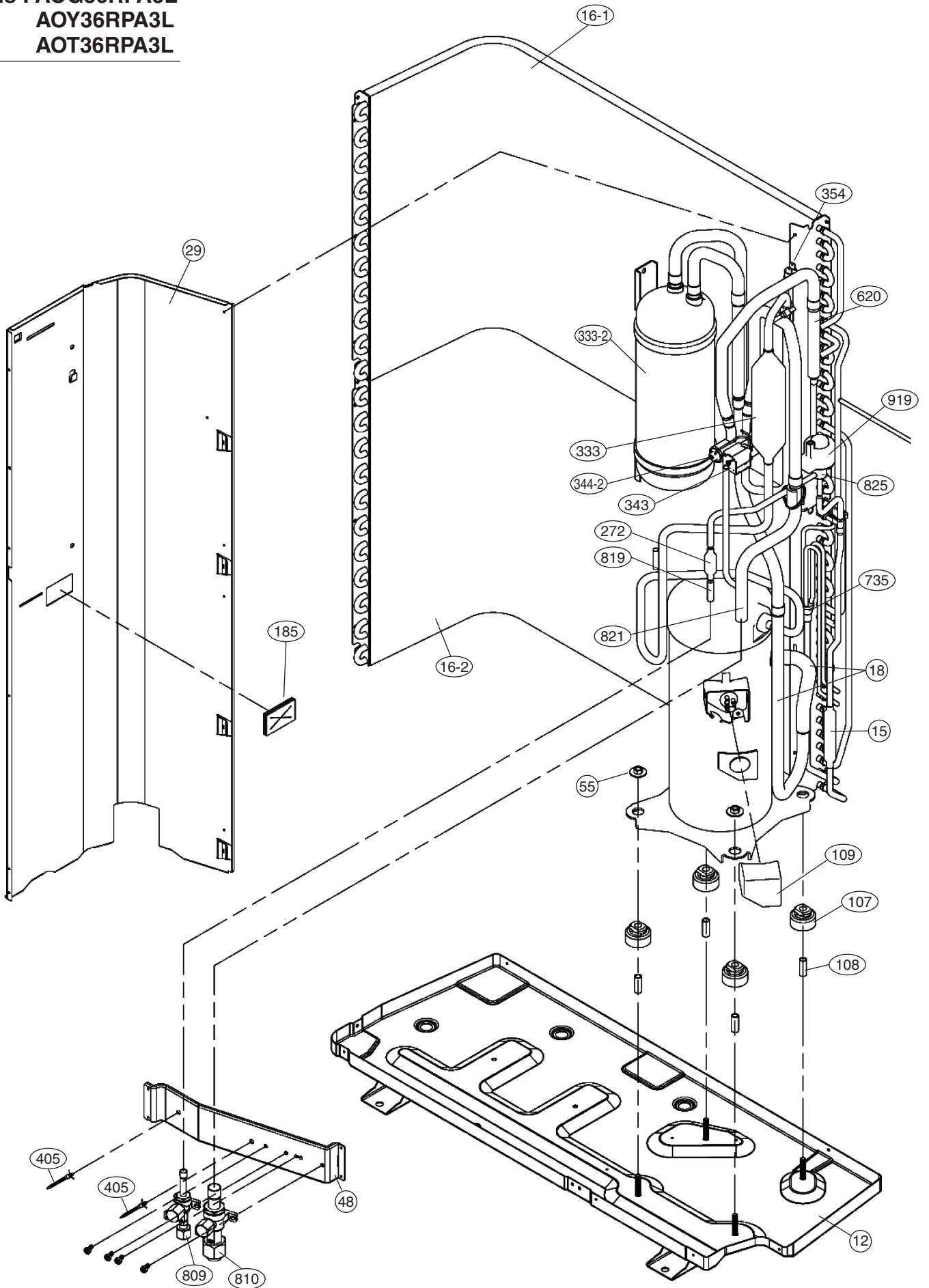


Models : AOG36RPA3L
AOY36RPA3L
AOG45RPA3L
AOY45RPA3L

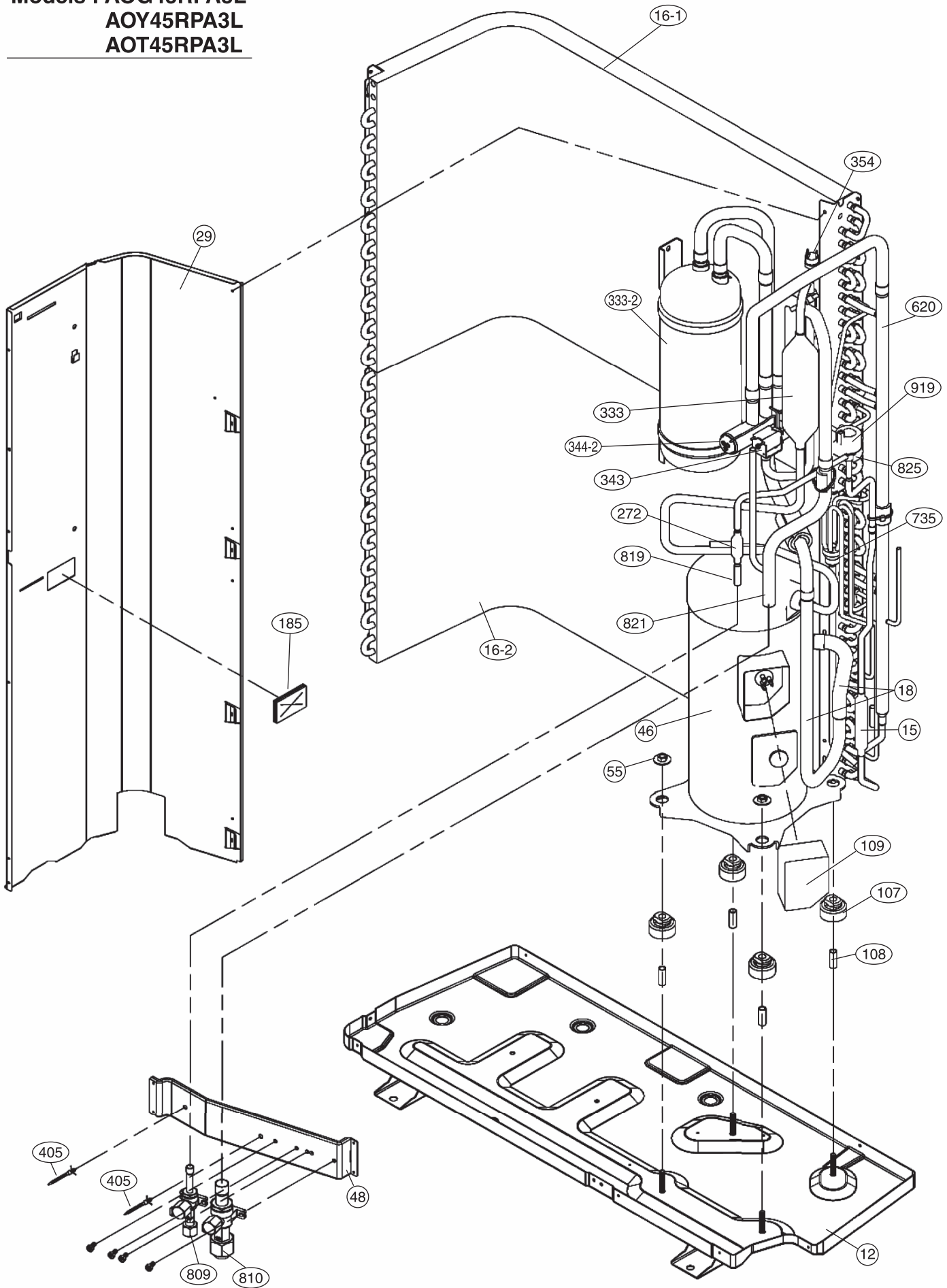




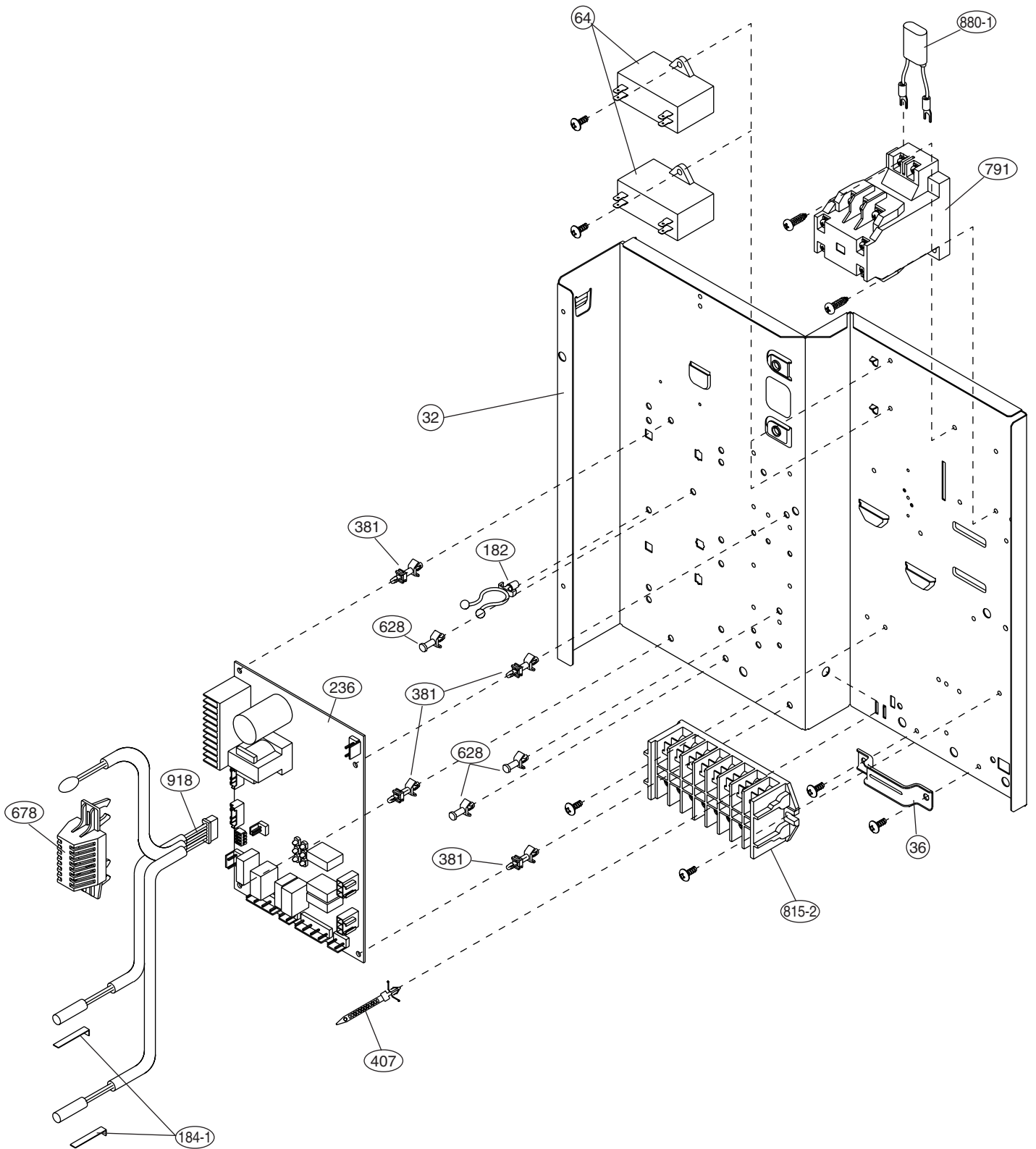
Models : AOG36RPA3L
AOY36RPA3L
AOT36RPA3L



Models : AOG45RPA3L
 AOY45RPA3L
 AOT45RPA3L



Models : AOG36RPA3L
AOY36RPA3L
AOT36RPA3L
AOG45RPA3L
AOY45RPA3L
AOT45RPA3L



PARTS LIST

INDOOR UNIT

When you order parts, please make a photocopy of this page and fill the number of the parts in the "Order" column.

Ref. No.	Description	Part No.	Ord. Q'ty
34	Capacitor (Fan Motor)	9703306068	
47-1	Rubber (Discha. Pipe)	313194159807	
61	Decoration Plate (for AUG)	9363131000	
61	Decoration Plate (for AUY, AUT)	9362787000	
67	Rubber (Vibration Proof)	9362783002	
71	Grille Hook Holder	9362782005	
93	Filter	9362766005	
117-3	Hex. Nut w / Spring Washer	301721180114	
122	Louver Support Holder	9362799003	
127	Drain Hose	9362784009	
138	Separate Wall	9362737005	
143-1	Clamp NK-3N	313361274700	
143-3	Clamp NK-9N	313209399700	
146-1	Evaporator-A Assy	9363149005	
146-2	Evaporator-B Assy	9363150001	
155	Special Nut M6	9307615016	
160	Drain Hose Assy	9370934014	
164	Fan Motor Assy-IN	9600878019	
168	Cabinet-E	9362735001	
184-1	Thermo. Spring-A	313728262708	
187	Clamp No. 1219	313361271706	
195	Clamp SKB-100	313361275805	
196-2	Clamp SKB-150	313035356905	
197	Wind Guide Board	9363117004	
223	Control Box	9362762007	
226	Motor Gear	9362764001	
234	Thermistor Assy-Room	9703299025	
235	Thermistor Assy-Pipe	9703297014	
236	Controller PCB Assy (for 36)	9704557421	
236	Controller PCB Assy (for 45)	9704557438	
240	Remote Control Unit (for AUG,AUY)	9371438016	
240	Remote Control Unit (for AUT)	9371438054	
244	Pipe Cover	9362748001	
245	Cable Clamp	313714181904	
337-1	Reinforcement (Eva.)-A	9362749008	
337-2	Reinforcement (Eva.)-B	9362750004	
338	Motor Holder	9362765008	
381	Locking Spacer	313209391506	
457	Reinforcement (Drain Pan)	9362757003	
460-1	Pump Cover-A	9362775007	
460-2	Pump Cover-B	9362776004	
462	Top Cover Plate	9362806015	
464	Cabinet-A	9362800013	
465	Cabinet-B	9362801010	
467	Drain Port	9362786003	
468	Special Nut-A (Large)	313005446653	
469	Special Nut-B (Small)	313005446759	


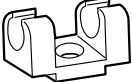
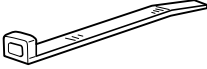




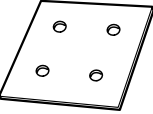

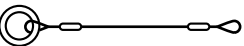
Ref. No.	Description	Part No.	Ord. Q'ty
472-1	Grille Reinforcement • T-A	9362738002	
472-2	Grille Reinforcement • T-B	9362739009	
472-3	Grille Reinforcement • T-C	9362740005	
472-4	Grille Reinforcement • T-D	9362741002	
472-5	Grille Reinforcement • T-E	9362742009	
474	Turbo Fan Assy	9362803014	
476-2	Special Washer	9362756006	
477	Bellmouth (B)	9362774000	
479	Float Switch	9703285004	
482	Pump Unit	9703125010	
484	Hook	9362736008	
487	Grille Hinge Wire	9362754002	
488	Drain Pan Plug	313005174654	
514	Control Box Cover	9362763004	
522	Joint Gear	9362772006	
540	Bypass Pipe-B	9363152005	
541	Terminal Plate	9363642001	
542	Panel Base	9362759014	
543	Panel Frame Holder	9362761017	
544	Panel Base Holder	9362760010	
545	Panel Frame	9362758017	
563	Insulation (Inner Box)	9362768009	
564	Bypass Pipe-A Assy	9363151008	
565	Evaporator Holder Assy	9362802017	
568	Noise Insulation	9363143003	
628	Locking Spacer-B	313005446558	
652-1	Thermistor Holder Pipe	313806262805	
690	Joint-A	9362773003	
692	Joint Shaft	9362771009	
705	Louver	9362769013	
710	Intake Grille	9362767019	
735	Distributor Assy	9363154009	
777-1	Grille Hook-A	9362779012	
777-2	Grille Hook-B	9362778015	
798	Pump Hook Bracket	9362753005	
803	Cabinet-D	9362734004	
814	Cabinet-C	9362733007	
815-1	Terminal 3P	9306489052	
815-2	Terminal 3P	9703345012	
834-1	Wire Cover-A	9362789004	
834-2	Wire Cover-B	9362788007	
835	Cushion Rubber (Pump)	9362777001	
847	Louver Supporter	9362770019	
858	Grille Spring	9362755009	
875	Filter PCB Assy	9704561091	
876-2	Step Motor	9360307019	
897	Coupling Pipe-A Assy	9363153002	
898	Coupling Pipe-B Assy	9363155006	
982-1	Cord Clamp	9356857009	

OUTDOOR UNIT



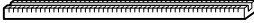
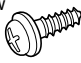
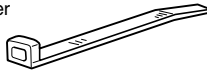

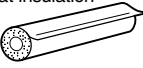


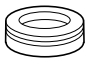
Ref. No.	Description	Part No.						Ord. Q'ty
		AOG36RPA3L	AOY36RPA3L	AOT36RPA3L	AOG45RPA3L	AOY45RPA3L	AOT45RPA3L	
2	Fan Cover	9352159015	9352159015	9365905012	9352159015	9352159015	9365905012	
4	Emblem-Rear	313791088308	9351355005	9351355005	313791088308	9351355005	9351355005	
5	Cabinet-A, Painted	9352146015	9352146015	9352146015	9352146015	9352146015	9352146015	
6	Cabinet-C, Painted	9352149016	9352149016	9352149016	9352149016	9352149016	9352149016	
9	Cabinet-B, Painted	9352147012	9352147012	9352147012	9352147012	9352147012	9352147012	
12	Base Assy, Painted	9352136016	9352136016	9352136016	9352136016	9352136016	9352136016	
15	Dryer	9368111014	9368111014	9368111014	9368111014	9368111014	9368111014	
16-1	Condenser-A Assy	9353023001	9353023001	9353023001	9355338011	9355338011	9355338011	
16-2	Condenser-B Assy	9353024008	9353024008	9353024008	9353363008	9353363008	9353363008	
18	Suction Pipe Assy	9372226025	9372226025	9372226025	9372226018	9372226018	9372226018	
26	Compressor Cover-A	9370774030	9370774030	9370774030	9370774030	9370774030	9370774030	
29	Separate Wall Assy	9355277013	9355277013	9355277013	9355277013	9355277013	9355277013	
30	Blower Cover, Painted	9352151019	9352151019	9352151019	9352151019	9352151019	9352151019	
32	Control Box Metal	9352134012	9352134012	9352134012	9352134012	9352134012	9352134012	
36	Cord Holder Metal	9356934007	9356934007	9356934007	9356934007	9356934007	9356934007	
39	Propeller Fan Assy	9366378013	9366378013	9366378013	9366378013	9366378013	9366378013	
41	Fan Motor Assy-Out	9600832028	9600832028	9600832028	9600832028	9600832028	9600832028	
45	Bracket (Motor) Assy	9368108007	9368108007	9368108007	9368108007	9368108007	9368108007	
46	Compressor-C Assy	9371396033	9371396033	9371396033	9371396026	9371396026	9371396026	
48	Bracket (Coupler) Assy	9355281010	9355281010	9355281010	9355281010	9355281010	9355281010	
55	Special Nut M8 (For Comp.)	9355091008	9355091008	9355091008	9355091008	9355091008	9355091008	
64	Capacitor (Fan Motor)	9357965024	9357965024	9357965024	9357965024	9357965024	9357965024	
107	Rubber Seat-A (For Comp.)	9364084008	9364084008	9364084008	9364084008	9364084008	9364084008	
108	Sleeve-A (For Comp.)	9364085005	9364085005	9364085005	9364085005	9364085005	9364085005	
109	Terminal Cover (For Comp.)	9364087009	9364087009	9364087009	9364087009	9364087009	9364087009	
111	Terminal Packing	9364086002	9364086002	9364086002	9364086002	9364086002	9364086002	
182	Clamp No.249	313361271505	313361271505	313361271505	313361271505	313361271505	313361271505	
184-1	Thermo. Spring-A	313728262708	313728262708	313728262708	313728262708	313728262708	313728262708	
185	Rubber Bushing	313005066051	313005066051	313005066051	313005066051	313005066051	313005066051	
236	Controller PCB Assy	9704764133	9704764133	9704764133	9704764096	9704764096	9704764096	
272	Strainer Assy	9354139008	9354139008	9354139008	9354139008	9354139008	9354139008	
333	Accumulator	9350363018	9350363018	9350363018	9350363018	9350363018	9350363018	
333-2	Accumulator Assy (B)	9371615011	9371615011	9371615011	9371615011	9371615011	9371615011	
343	Solenoid Coil	9900165024	9900165024	9900165024	9900165024	9900165024	9900165024	
344-2	4-Way Valve	9900164010	9900164010	9900164010	9970035012	9970035012	9970035012	
354	Pressure Switch	9704045003	9704045003	9704045003	9704045003	9704045003	9704045003	
373	Grip	9352157004	9352157004	9352157004	9352157004	9352157004	9352157004	
381	Locking Spacer	313209391506	313209391506	313209391506	313209391506	313209391506	313209391506	
405	Clamp No.1763	313816345304	313816345304	313816345304	313816345304	313816345304	313816345304	
407	Clamp (Cable) No.1259	313739340109	313739340109	313739340109	313739340109	313739340109	313739340109	
527	Protection Net	9352163012	9352163012	9352163012	9352163012	9352163012	9352163012	
620	Inlet Pipe (Cond.) Assy	9372224021	9372224021	9372224021	9372224014	9372224014	9372224014	
628	Locking Spacer	313005446558	313005446558	313005446558	313005446558	313005446558	313005446558	
646	Compressor Cover-B	9370774047	9370774047	9370774047	9370774047	9370774047	9370774047	
678	Bracket (Thermistor)	313557406106	313557406106	313557406106	313557406106	313557406106	313557406106	
734	Cabinet Top Plate	9352161018	9352161018	9352161018	9352161018	9352161018	9352161018	
735	Distributor Assy	9372230022	9372230022	9372230022	9372230015	9372230015	9372230015	
790-1	Belt Heater-A	9361140066	9361140066	9361140066	9361140042	9361140042	9361140042	
791	Magnetic Relay	9900078010	9900078010	9900078010	9900078010	9900078010	9900078010	
803	Cabinet-D, Painted	9352150012	9352150012	9352150012	9352150012	9352150012	9352150012	
805	Blower Cover Corner	9352160011	9352160011	----	9352160011	9352160011	----	
809	Ball Valve-A	9371799049	9371799049	9371799049	9371799049	9371799049	9371799049	
810	Ball Valve-B	9371799056	9371799056	9371799056	9371799056	9371799056	9371799056	
813	Cabinet Hook	9352148002	9352148002	9352148002	9352148002	9352148002	9352148002	
815-2	Terminal 8P	9363276022	9363276022	9363276022	9363276022	9363276022	9363276022	
816	Wire Clamp Metal	313584219902	313584219902	313584219902	313584219902	313584219902	313584219902	
819	Valve-A Coupl. Pipe	9363457001	9363457001	9363457001	9363457001	9363457001	9363457001	
821	Joint Pipe (Valve-B)	9352284007	9352284007	9352284007	9352284007	9352284007	9352284007	
822	Fan Cover Fixture-A	9352158018	9352158018	----	9352158018	9352158018	----	
825	Expansion Valve	9900170011	9900170011	9900170011	9900170028	9900170028	9900170028	
880-1	Network	9700987017	9700987017	9700987017	9700987017	9700987017	9700987017	
918	Thermistor Assy	9900129019	9900129019	9900129019	9900129019	9900129019	9900129019	
919	Expansion Valve Coil	9900172015	9900172015	9900172015	9900172015	9900172015	9900172015	

STANDARD ACCESSORIES

INDOOR UNIT ACCESSORIES

Name and Shape	Part No.
Coupler heat insulation 	9350716029 } 1 each 9352766015 }
Remote control unit cord clamp 	313714181904
Binder 	313035356905 (Large)
	313361275805 (Small)
Screw 	(A) 301141134166 For installing the mounting bracket
	(B) 301141153027 For installing the cord clamp
Special nut A (large flange) 	313005446653
Special nut B (small flange) 	313005446759
Remote control unit 	(AUG, AUY models) 9371438016
	(AUT model) 9703173035
Template 	9363173000
Blower cover insulation 	9363265002
Hook wire 	9363168006

OUTDOOR UNIT ACCESSORIES

Name and Shape	AOG36RPA3L AOY36RPA3L AOG45RPA3L AOY45RPA3L	AOT36RPA3L AOT45RPA3L
Power cap 	9352173011	9352173011
Auxiliary pipe assembly 	9355292016	9355292016
Edge cover 	9352436000	9352436000
Tapping screw 	301463040100	301463040100
Binder 	313035356905	313035356905
Putty 	303020200114	303020200114
Coupler heat insulation 	313005074759	313005074759
Pipe (drain) 	313728031005	—
Flexible tube 	313013042915	—
Cap (drain) 	313166024302	—

0308G2362